

METERING EQUIPMENT

Accu-Feed Engineering is a leader in high performance metering equipment for your injection, extrusion, or blow molding operation.

From the ruggedly constructed, solid steel housing to the precision control, you will find that this is a system that will give you years of accurate, repeatable results.

We offer two models of feeders in many different configurations for any application you may require.

Our **Standard Feeder** assemblies use augers from 1/2" diameter to meter color and additives to 2" diameter for regrind material.

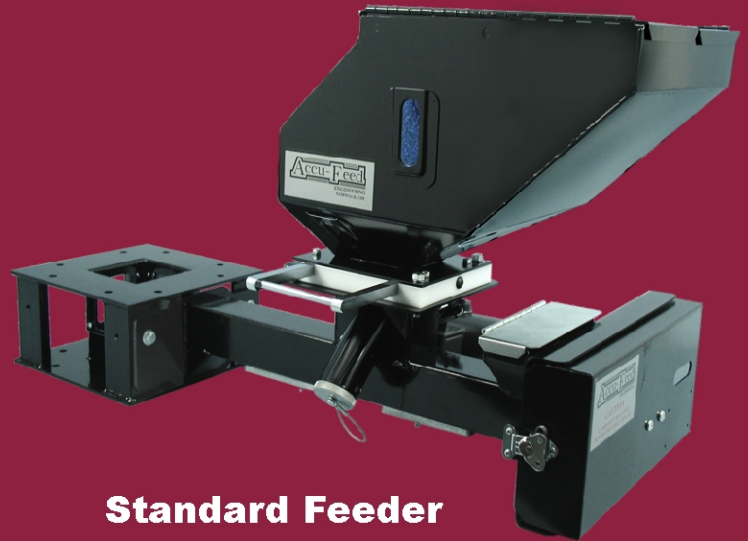
Our **Mini-Feeder** assemblies use 1/2" diameter augers for color and additives to 1 1/4" diameter augers for regrind material.

With our precision controls, you will minimize your colorant usage and eliminate overcoloring and scrap due to mismatches. Accu-Feed can control up to four additives, regardless of let down ratio.

In addition to our extensive line of feeders and controls, we have a complete line of accessory items to fit your exact specifications.

Whatever your color or additive requirements, **Accu-Feed Engineering** has the equipment that will deliver superior performance while saving you money.

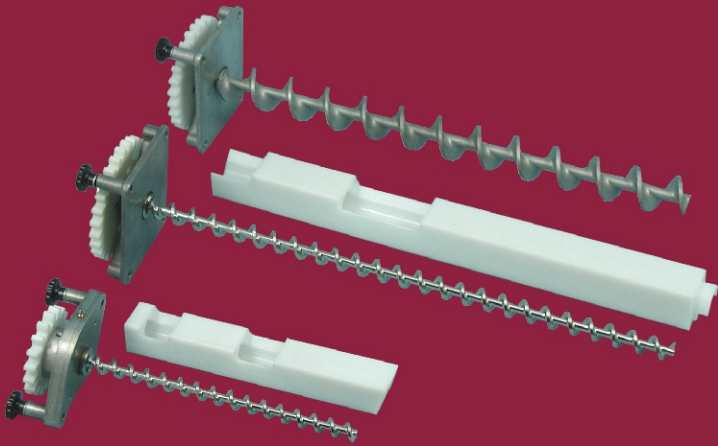
Accu-Feed
ENGINEERING



**Standard Feeder
With Small Offset Hopper**

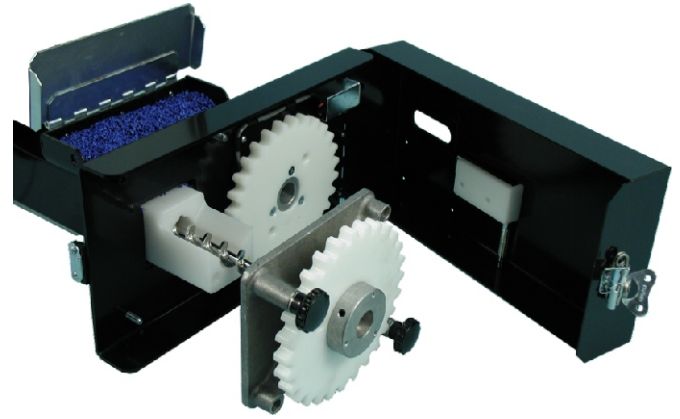


**Mini-Feeder
With Large Hopper**



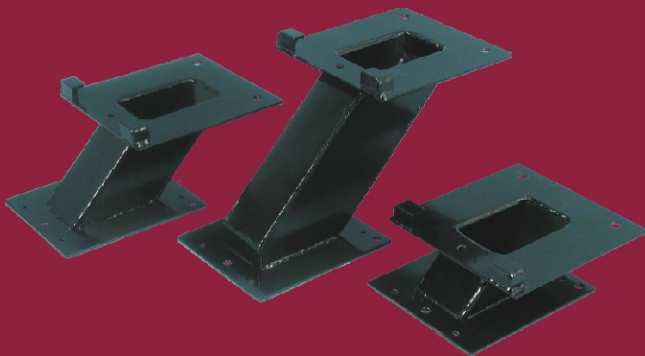
Auger Assemblies

Polished stainless steel augers with companion inserts are available in 13 sizes to precisely match your desired throughput rate. Available for our standard feeders and mini-feeders.



Material Changeover

Auger Bearing Plate with easy turning thumbscrews speeds up material changeover and clean up. Heavy duty nylon gears provide years of life and make auger installation a breeze. No motors or couplings to align when reassembling. Insert puller located in the gear cover makes insert removal fast and easy.



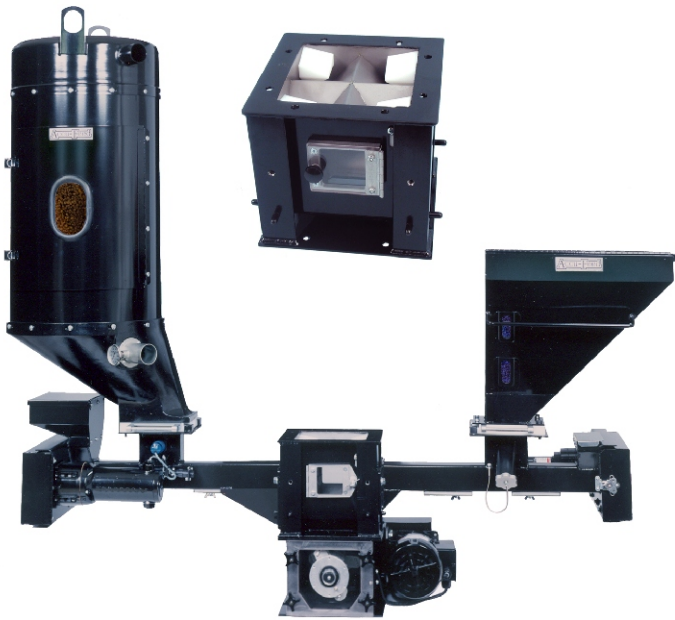
Offset Hopper Adapters

We offer sizes from 2 to 12 inches to eliminate hopper clearance problems. There is no need for spacers or extenders. Available for both our standard feeders and mini-feeders.



Calibration Hopper

Draw material samples without process interruption. Outboard hopper and port allow independent metering of material for easy calibration samples. With this unique design, samples may be taken during production without any decrease in material for part in process.



Regrind Management

Accu-Feed specializes in regrind control systems. Choose your color and regrind percentages and our integrated control automatically adjusts color feed rate when regrind is present. Save thousands on colorant costs and use up your regrind as it's created. Our unique web design with adjustable baffles directs and controls natural material flow, allowing for unrestricted metering of colorant pellets and regrind for optimal blending uniformity.

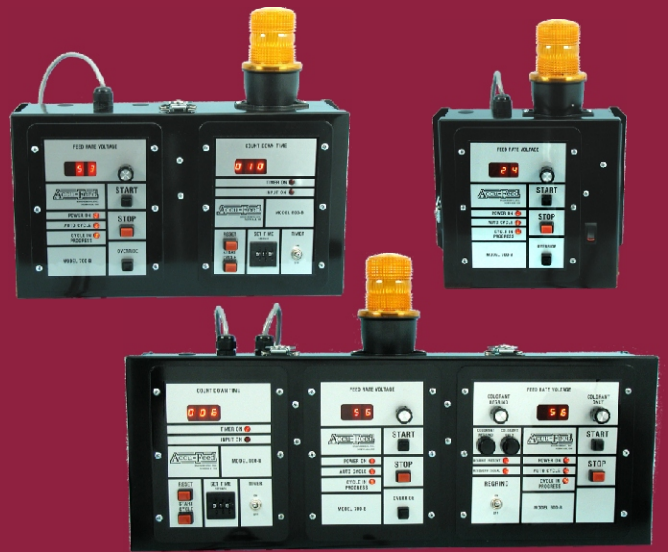
Optional Loaders

Our complete line of pneumatic loaders is available to mount on our base units for loading natural material or our dual loaders for loading a blend of natural and regrind together. Hopper mount models can be used on the hoppers to load colorant, additives or regrind.



Base Mounting Units

Our 10" x 10" base unit for our standard feeder provides a solid foundation for any size hopper. Feed up to four (4) additives using one base unit. Units available for standard feeders and mini-feeders.

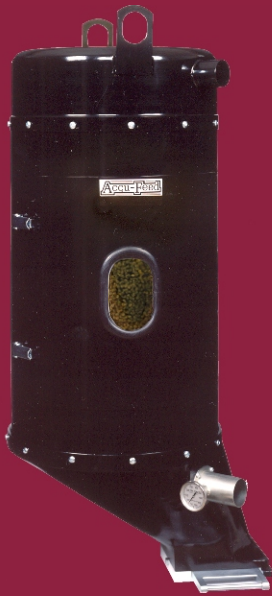


Modular Controls

Controls maintain precise feed rates under varying loads and fluctuating line voltages. Optional modular panels include a timer panel to compensate for screw recovery variances and a color/regrind panel to automatically adjust colorant feed when regrind is present.

Hoppers

Choose from various hopper sizes to best suit your throughput needs. Hoppers are available for our standard feeders and our mini-feeders.



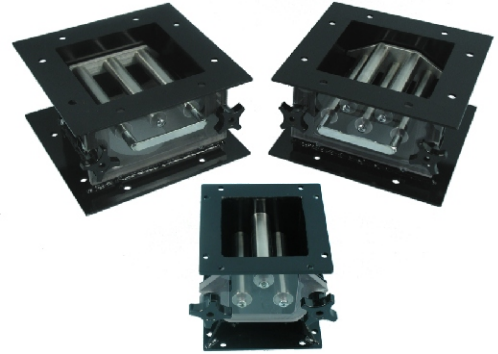
Regrind Drying Hopper

Our drying hopper will independently dry regrind. Two Y valves provide controlled air flow from your present dryer.



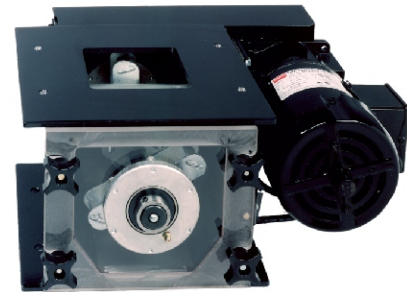
Material Sensing Alarm

The small, compact box comes with amber strobe light and 96 db buzzer. The lighted ON/OFF switch signals the alarm is on and ready for operation. When the sensor detects a high/low condition, the alarm will start the strobe and buzzer. When the Buzzer Interrupt switch is pressed, it stops the buzzer. The strobe will continue to flash until the problem is resolved. When the high/low condition is corrected, the buzzer will reset, the strobe will stop flashing and the alarm is ready for the next high/low signal.



Drawer Magnets

Magnet assemblies with Alnico magnets are available for both standard feeders and mini-feeders. Our drawer magnets have stainless steel sleeves and removable Lexan® access panels.



Intermixer

Accu-Feed's intermixer provides dual action mixing for complete homogeneous blending prior to entering the feed throat. There are 3 models available. The 3# intermixer for the mini-feeder and the 5# & 10# intermixers for the standard feeder.

Accu-Feed

ENGINEERING

50 Newton Street - P.O. Box 404 - Norwalk, OH 44857-0404

Phone: 1-888-844-2228 Fax: 1-888-717-2228

Email: info@accu-feed.com

www.accu-feed.com